

## PARTICIPATION IN DECISION MAKING

Participation in decision-making plays an important role in empowerment of women. This chapter focuses on following parameters:

- 5.1:** Total Electorate(Voters) and Percentage of Voting by Sex in various General Elections to State Legislative Assembly in Nagaland from 1964 to 2013
- 5.2:** Number of persons contested and elected by sex in various General Election to State Legislative Assembly in Nagaland from 1964 to 2013
- 5.3:** Total Electorate (Voters) & Percentage of Voting by Sex in various General Election to Lok Sabha in Nagaland from 1964-2014.
- 5.4:** No. of person contested and elected by Voting by Sex in various General Election to Lok Sabha in Nagaland from 1964-2014
- 5.5:** District-wise number of women representatives elected to state legislative assembly and Lok Sabha/Rajya Sabha during 2013.
- 5.6:** Assembly segment-wise female electorate of Nagaland during General Election 2013
- 5.7:** Performance of women contestants for Lok Sabha in Nagaland and India from 10th to 16th general election.
- 5.8:** Representation of women in the state council of ministers in Nagaland since 1st General Election of Nagaland

### Some important findings

#### Women in State Assembly Election

- Participation of women electors in the State Assembly elections over the years has been very encouraging. In the 11<sup>th</sup> State Assembly Election (2008), there were 86.39 % women electors as against 85.99 % men electors and in the 12<sup>th</sup> state assembly election (2013) 91.33 % of women electors and 89 % of male electors have participated in the election. In constituency wise, Southern Angami-II with 53.64 % has the highest percentage of female electors to total electors followed by Southern Angami-I with 52.44 % under kohima district. Dimapur-I with 45.76 % has the lowest percentage of female electors to total electors.
- There were 4 women contestants as against 214 male contestants during the 11<sup>th</sup> state assembly election and during the 12<sup>th</sup> State Election, 2 women contested as against 187 male contestants. So far, no women contestants has managed to win a seat in the state legislative assembly.

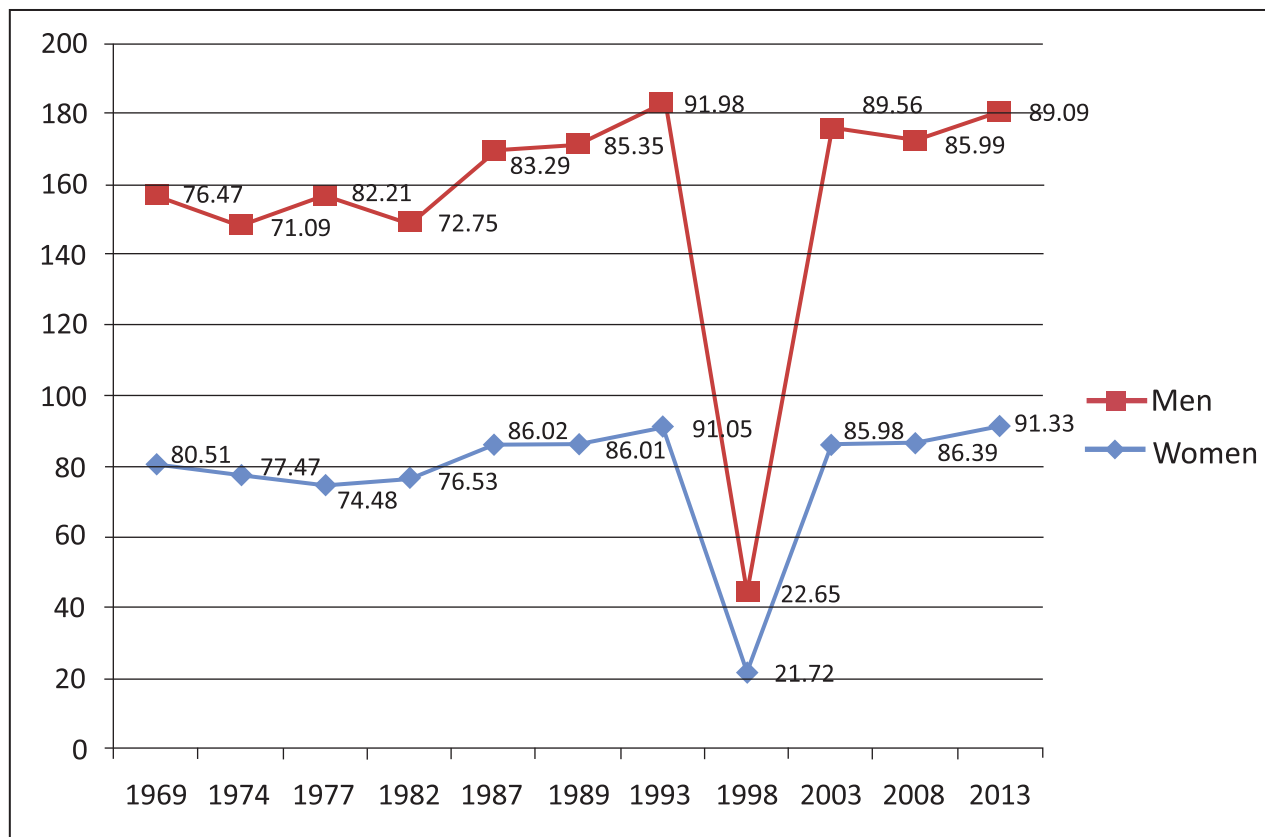
#### Lok Sabha General Election

- Female participation (voters) in the Lok Sabha election has increased from 50.37 % in the 5<sup>th</sup> general election (1971) to 87.75% in the 16<sup>th</sup> general election (2014).

**Table-5.1: Total Electorate(Voters) and Percentage of Voting by Sex in various General Elections to State Legislative Assembly in Nagaland from 1964 to 2013**

General Election	Year	Total no. of Electors(Voters)			% of Electors (Voters) voted in		
		Women	Men	Total	Women	Men	Total
1	2	3	4	5	6	7	8
1st	1964			124166			50.51
2nd	1969	83102	93829	176931	80.51	76.47	78.49
3rd	1974	176156	224166	400322	77.47	71.09	74.28
4rd	1977	183223	214812	398035	74.48	82.21	78.345
5th	1982	266163	330290	596453	76.53	72.75	74.64
6th	1987	262574	319379	581953	86.02	83.29	84.655
7th	1989	261805	320611	582416	86.01	85.35	85.68
8th	1993	381661	421250	802911	91.05	91.98	91.515
9th	1998	438848	487721	926569	21.72	22.65	22.185
10th	2003	485364	529477	1014841	85.98	89.56	87.77
11th	2008	635875	666391	1302266	86.39	85.99	86.19
12th	2013	590150	608299	1198449	91.33	89.09	90.21

Source: Chief Electoral officer, Nagaland: Kohima.

**Percentage of Voting by Sex in various General Elections to State Legislative Assembly**

**Table-5.2: Number of persons contested and elected by sex in various General Election to State Legislative Assembly in Nagaland from 1964 to 2013**

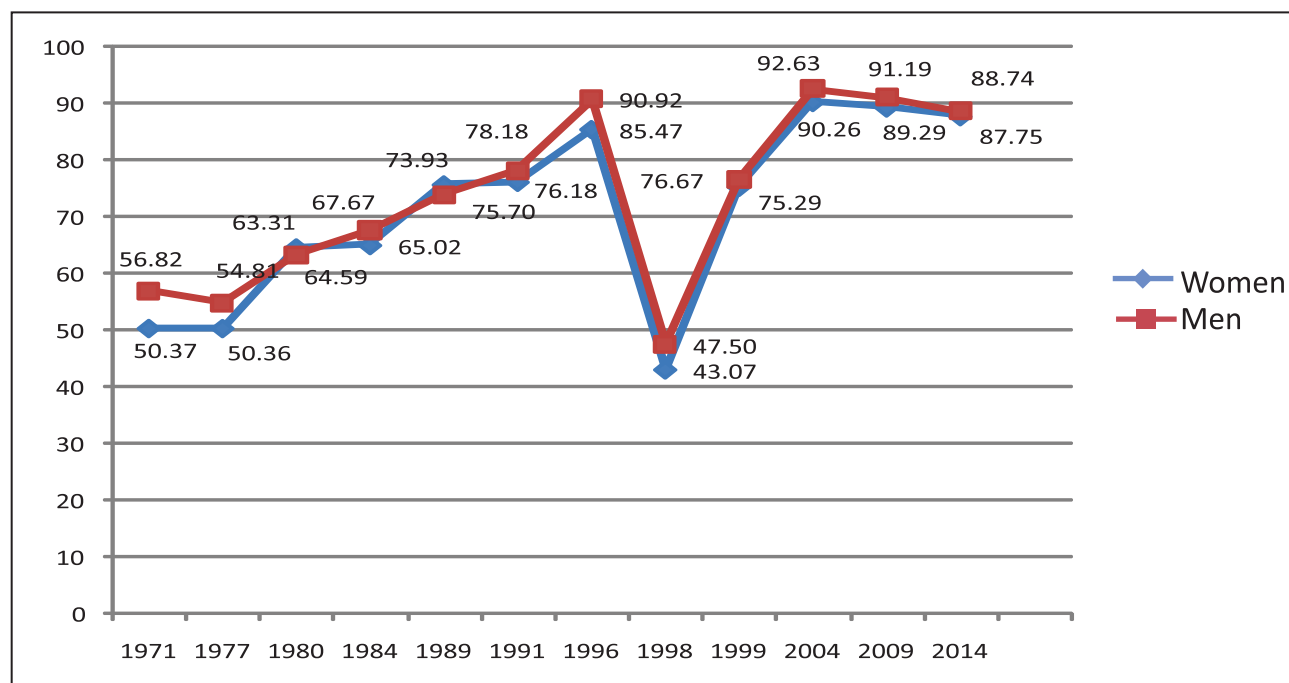
General Election	Year	Total No. of seats	No. of contestants		Female		Male	
			Female	Male	No. of elected	% of winning to total seats	No. of elected	% of winning to total seats
1	2	3	4	5	6	7	8	9
1st	1964	40	0	73	0	0	40	100
2nd	1969	40	2	142	0	0	40	100
3rd	1974	60	0	219	0	0	60	100
4th	1977	60	0	204	0	0	60	100
5th	1982	60	1	244	0	0	60	100
6th	1987	60	3	211	0	0	60	100
7th	1989	60	0	140	0	0	60	100
8th	1993	60	1	177	0	0	60	100
9th	1998	60	0	80	0	0	60	100
10th	2003	60	3	222	0	0	60	100
11th	2008	60	4	214	0	0	60	100
12th	2013	60	2	187	0	0	60	100

Source: Chief Electoral officer, Nagaland: Kohima.

**Table-5.3: Total Electorate (Voters) & Percentage of Voting by Sex in various General Election to Lok Sabha in Nagaland from 1964-2014.**

General Election	Year	Total No. of Electorates(Voters)			% of Electors(Voters) voted in elections		
		Women	Men	Total	Women	Men	Total
1	2	3	4	5	6	7	8
1st	N.A	N.A	N.A	N.A	N.A	N.A	N.A
2nd	N.A	N.A	N.A	N.A	N.A	N.A	N.A
3rd	N.A	N.A	N.A	N.A	N.A	N.A	N.A
4th	1967	N.A	N.A	214951	N.A	N.A	uncontest
5th	1971	130263	145196	275459	50.37	56.82	53.60
6th	1977	210664	262593	473257	50.36	54.81	52.59
7th	1980	212719	247364	460083	64.59	63.31	63.95
8th	1984	270787	323275	594062	65.02	67.67	66.35
9th	1989	360458	452553	813011	75.70	73.93	74.82
10th	1991	365211	449625	814836	76.18	78.18	77.18
11th	1996	416617	457901	874518	85.47	90.92	88.20
12th	1998	438848	487721	926569	43.07	47.50	45.29
13th	1999	450515	505399	955914	75.29	76.67	75.98
14th	2004	494319	547114	1041433	90.26	92.63	91.45
15th	2009	645156	676722	1321878	89.29	91.19	90.24
16th	2014	582454	600518	1182972	87.75	88.74	88.25

Source: Chief Electoral officer, Nagaland: Kohima.

**Percentage of Voting by Sex in various General Election to Lok Sabha**

**Table-5.4: No. of person contested and elected by Voting by Sex in various General Election to Lok Sabha in Nagaland from 1964-2014**

General Election	Year	Totsl No. of Seats	Total No. of Contestants		Female		Male	
			Women	Men	No. of Elected	% of winning	No. of Elected	% of winning
1	2	3	4	5	6	7	8	9
1st								
2nd								
3rd								
4th	1967	1	0	1	0	0	1	100
5th	1971	1	0	2	0	0	1	100
6th	1977	1	1	1	1	100	0	0
7th	1980	1	1	1	0	0	1	100
8th	1984	1	0	3	0	0	1	100
9th	1989	1	0	2	0	0	1	100
10th	1991	1	0	3	0	0	1	100
11th	1996	1	0	3	0	0	1	100
12th	1998	1	0	2	0	0	1	100
13th	1999	1	0	5	0	0	1	100
14th	2004	1	0	5	0	0	1	100
15th	2009	1	0	3	0	0	1	100
16th	2014	1	0	3	0	0	1	100

Source: Chief Electoral officer, Nagaland: Kohima.

**Table-5.5: District-wise number of women representatives elected to state legislative assembly and Lok Sabha/Rajyasabha during 2013**

Sl.No.	District	Member of Legislative Assembly		Member of Parliament	
		Total	Women	Total	Women
1	2	3	4	5	6
1	Dimapur	5	0	2	0
2	Peren	2	0		
3	Kohima	7	0		
4	Pughoboto	1	0		
5	Phek	5	0		
6	Mokokchung	10	0		
7	Zuhneboto	6	0		
8	Wokha	4	0		
9	Mon	9	0		
10	Longleng	2	0		
11	Tuensang	7	0		
12	Kiphire	2	0		
Total		60	0	2	0

Source: Chief Electoral officer, Nagaland: Kohima.

**Table-5.6: Assembly segment-wise female electorate of Nagaland during General Election 2013**

Sl.No.	Assembly segment No. and Name	Electors		
		Total	Female	% of female electors to total electors
1	2	3	4	5
1	Dimapur-I	19875	9095	45.76
2	Dimapur-II	46518	22246	47.82
3	Dimapur-III	27744	13583	48.96
4	Ghaspani-I	58728	28837	49.10
5	Ghaspani-II	30388	14924	49.11
6	Tening	29026	14376	49.53
7	Peren	28091	14336	51.03
8	Western Angami	16283	8307	51.02
9	Kohima Town	29995	14703	49.02
10	Northern Angami-I	16432	8588	52.26
11	Northern Angami-II	19089	9697	50.80
12	Tseminyu	25530	13103	51.32
13	Southern Angami-I	13400	7027	52.44
14	Southern Angami-II	17079	9162	53.64
15	Pughoboto	12862	6481	50.39
16	Pfutsero	21946	11279	51.39
17	Chizami	17511	8889	50.76
18	Chazouba	25731	13280	51.61
19	Phek	22289	10991	49.31
20	Meluri	19551	962	49.21
21	Tuli	17782	8326	46.82
22	Arkakong	16617	8164	49.13
23	Impur	10138	4962	48.94
24	Angetyongpang	14859	7146	48.09
25	Mongoya	14824	7461	50.33
26	Aonglenden	11949	5942	49.73
27	Mokokchung Town	5814	2913	50.10
28	Koridang	18843	9187	48.76
29	Jangpetkong	10750	5215	48.51
30	Alongtaki	13825	6810	49.26

Source: Chief Electoral officer, Nagaland: Kohima.

Cont..

**Table-5.6 cont.: Assembly segment-wise female electorate of Nagaland during General Election 2013**

Sl.No.	Assembly segment No. and Name	Electors		
		Total	Female	% of female electors to total electors
31	Akuluto	10726	5272	49.15
32	Atoizu	16075	8098	50.38
33	Suruhuto	14261	6927	48.57
34	Aghunato	14777	7596	51.40
35	Zuhneboto	21547	10752	49.90
36	Satakha	16026	8033	50.12
37	Tyui	12212	10659	50.25
38	Wokha	34277	17077	49.82
39	Sanis	22213	11077	49.87
40	Bhandari	25129	12083	48.08
41	Tizit	18462	8824	47.80
42	Wakching	19211	9130	47.52
43	Tapi	14746	7064	47.90
44	Phomching	19403	9196	47.39
45	Tehok	15453	7341	47.51
46	Mon Town	19925	9515	47.75
47	Aboi	11253	5459	48.51
48	Moka	17079	8313	48.67
49	Tobu	18513	9006	48.65
50	Tamlu	14460	6776	48.86
51	Longleng	22861	10855	47.48
52	Noksen	12088	5932	49.07
53	Longkhim-Chare	20333	10001	49.19
54	Tuensand Sadar-I	22084	10268	46.50
55	Tuensang Sadar-II	19505	9687	49.66
56	Noklak	15427	7405	48.00
57	Thonoknyu	18310	8913	48.68
58	Shamator-Chessore	17622	8847	50.20
59	Seyochung - Sitimi	22154	11066	49.95
60	Pungro- Kiphire	29848	14326	48.00

Source: Chief Electoral officer, Nagaland: Kohima.

**Table-5.7: Performance of women contestants for Lok Sabha in Nagaland and India from 10th to 16th general election.**

Sl.No.	General Election and Year	Year	Nagaland				India			
			Number of seats available for election	Number of women Contestants	Elected	Securities	Number of seats available for election	Number of women Contestants	Elected	Securities
1	2	3	4	5	6	7	8	9	10	11
1	10th Lok Sabha	1991	1	0	0	0	524	326	37	249
2	11th Lok Sabha	1996	1	0	0	0	543	599	40	518
3	12th Lok Sabha	1998	1	0	0	0	543	274	43	184
4	13th Lok Sabha	1999	1	0	0	0	543	284	49	183
5	14th Lok Sabha	2004	1	0	0	0	543	355	45	239
6	15th Lok Sabha	2009	1	0	0	0	543	556	59	441
7	16th Lok Sabha	2014	1	0	0	0	543	668	62	525

Source: Chief Electoral officer, Nagaland: Kohima.

**Table-5.8: Representation of women in the state council of ministers in Nagaland since 1st General Election of Nagaland**

General Election	Year	Total No. of Ministers	No. of women ministers	Total No. of Women representative in the state Legislative Assembly
1	2	3	4	5
1st	1964	11	0	0
2nd	1969	N.A	0	0
3rd	1974	N.A	0	0
4th	1977	N.A	0	0
5th	1982	N.A	0	0
6th	1987	N.A	0	0
7th	1989	N.A	0	0
8th	1993	N.A	0	0
9th	1998	N.A	0	0
10th	2003	12	0	0
11th	2008	12	0	0
12th	2013	12	0	0

Source: Nagaland Legislative Assembly, Kohima.